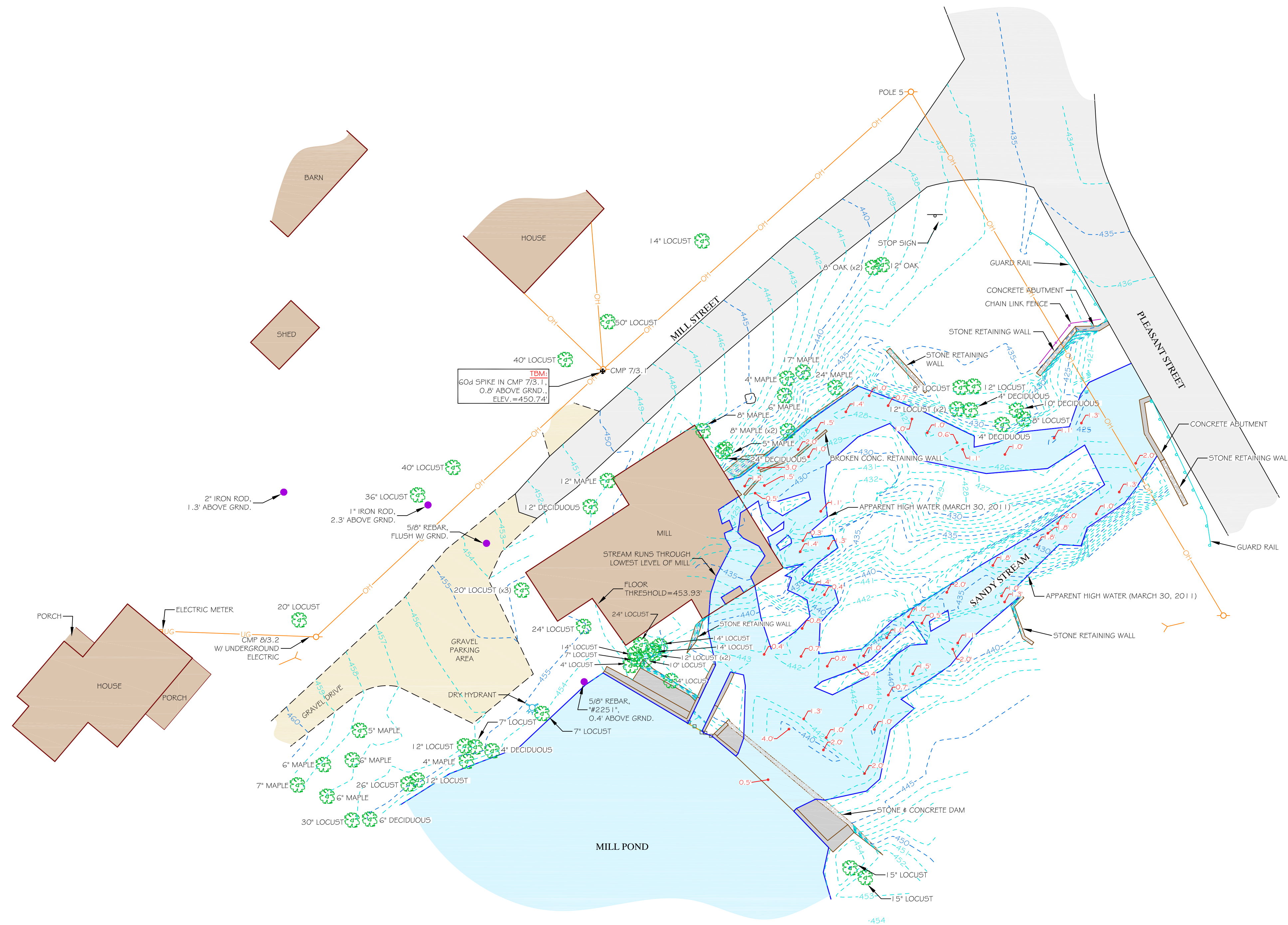
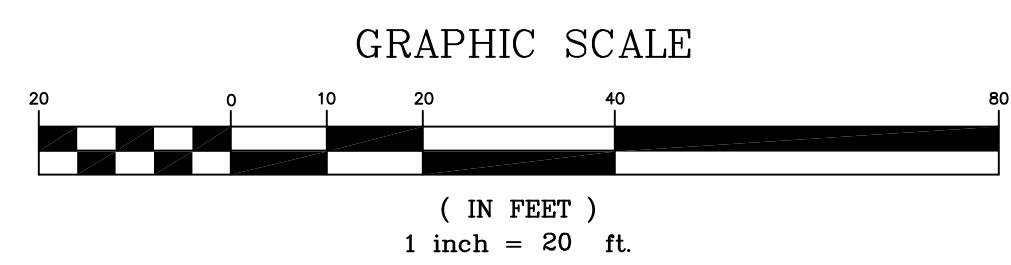


LEGEND	
	IRON ROD FOUND
	UTILITY POLE
	GUY ANCHOR
	OVERHEAD UTILITY LINE
	BELOW GROUND ELECTRIC
	DRY HYDRANT
	SIGN
	EXISTING CONTOUR
	GUARDRAIL
	BOULDER
	DECIDUOUS TREE
	APPROXIMATE WATER DEPTH



SURVEYOR'S NOTES:
 1) ALL DIRECTIONS ARE REFERENCED TO MAGNETIC NORTH 2011 DERIVED FROM A BEARING TAKEN WITH A HAND COMPASS.
 2) ELEVATIONS ARE REFERENCED TO THE NATIONAL GEODETIC VERTICAL DATUM OF 1929 (NGVD 29) BASED ON A 2 HOUR STATIC GPS SESSION POST-PROCESSED THROUGH THE NATIONAL GEODETIC SURVEY'S ONLINE POSITIONING USER SERVICE (OPUS).



SHEET TITLE: TOPOGRAPHIC SURVEY		NO.	DATE
CLIENT/PROJECT: ANTHONY GRASSI MILL REHABILITATION		REVISIONS	
LOCATION: MILL & PLEASANT STREETS	STATE: MAINE	CHECKED BY: TAD	DATE: MAY 4, 2011
TOWN: FREEDOM	COUNTY: WALDO	DRAWN BY: TAD	NO.
 508 Union Street, P.O. Box 1031, Gardton, ME 04843-1031 Ph: (207) 236-4365 Fax: (207) 236-3055 Toll Free: 1-888-282-4365		THIS PLAN PRELIMINARY WITHOUT SIGNATURE	
		PROJ. NO. 2011-016 SV-1	